

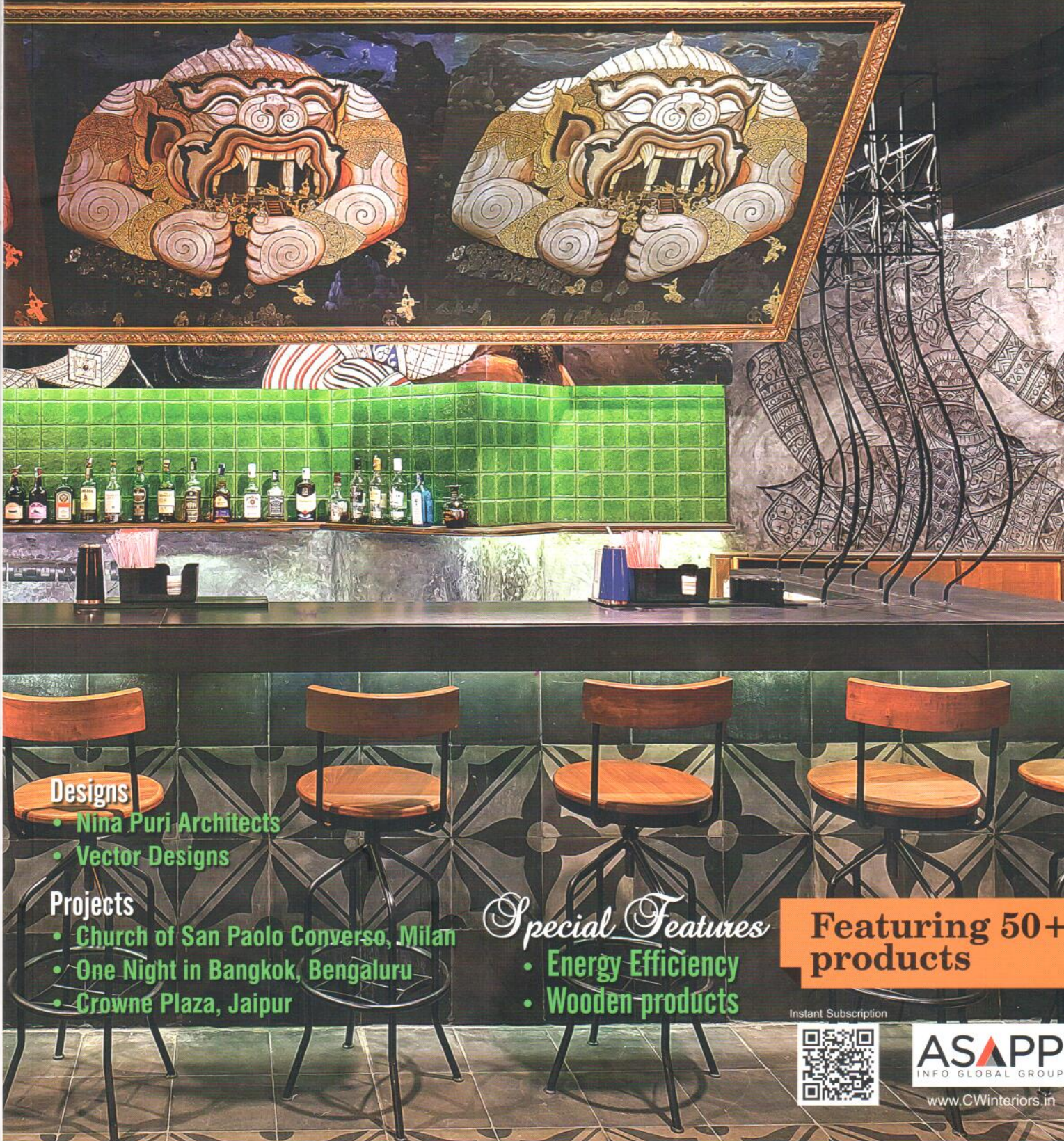
CW

INDIA & GULF'S FIRST B2B INTERIORS MAGAZINE

interiors

VOL 8 • No 6 • February 2016 • ₹150 • USD 10 • Dhs 30

INDIA



Designs

- Nina Puri Architects
- Vector Designs

Projects

- Church of San Paolo Converso, Milan
- One Night in Bangkok, Bengaluru
- Crowne Plaza, Jaipur

Special Features

- Energy Efficiency
- Wooden products

Featuring 50+ products

Instant Subscription



ASAPP
INFO GLOBAL GROUP

www.CWinteriors.in



The lounge is a welcoming space with its warm tones.

CROWN JEWEL

When the sand in the city settles, Jaipur's newest offering, Crowne Plaza shines bright.





The House of Han restaurant takes one right to the far east with the laser-cut MDF panels and striking chandeliers.

The InterContinental Hotels Group (IHG) has added yet another prize to its kitty with the launch of **Crowne Plaza, Jaipur Tonk Road**. The recently opened, stylish and contemporary Crowne Plaza designed (mostly) by **MAPS Design, Singapore**, is an amalgamation of the numerous professionals who have worked on the project.

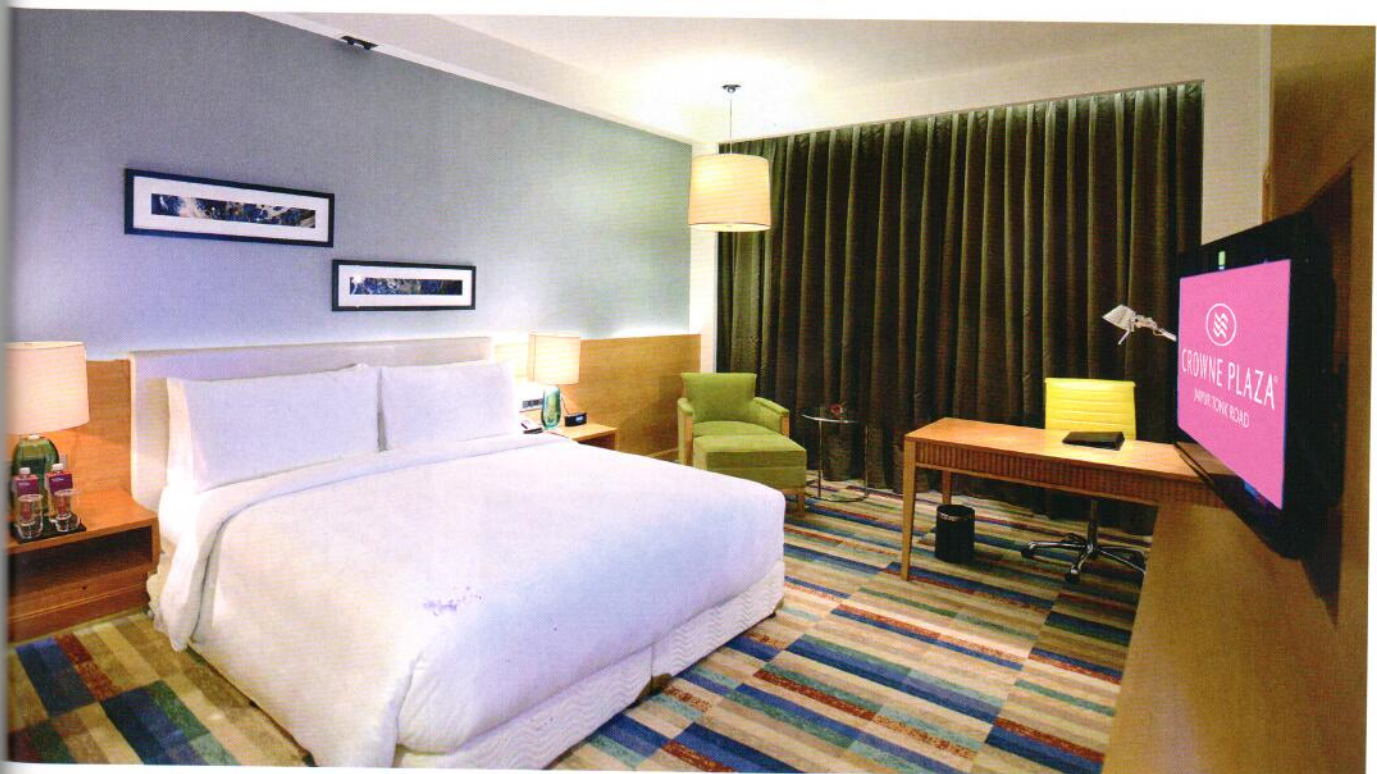
Located in the business hub of Sitapura, the massive hotel is touted to be the next best destination in Jaipur for weddings, business meets, honeymoons or family retreats. It can cater to any kind of event and clientele with

its 218 rooms and 20 suites. These include 90 superior king rooms, 67 superior twin rooms, 26 deluxe king rooms and 15 club king rooms with private sit-outs, 8 business suites and 12 executive suites too.

Open book

While the hotel has numerous elements to boast of, the biggest, and most striking one is the massive glass façade. The double glass unit ensures a lower carbon footprint and allows maximum natural light, while minimising heat transmission. The Plaza

The massive façade of Crown Plaza, Jaipur is unique due to its first-of-its-kind energy efficient, double glass units.



Each room in the hotel adopts a simple yet sophisticated palette mirroring the royal city.

The only hotel in the nation that does not have punch windows in the façade. Composite Aluminium panels, local sand stones and terracotta a fin used to construct the exterior helps the hotel retain a cool temperature throughout the day, even in the scorching Rajasthani summers.

Style and sophistication

Every aspect of the hotel is larger than life. Providing guests a comfortable stay, the 10 sq m rooms of the Crown Plaza are the biggest any hotel in the city offers. Rooms

facing inwards into the central atrium open up to a beautiful view of the pool and courtyard. A Sleep Advantage program has been installed in each room of the hotel. This package includes premium bedding, aromatherapy and quiet zone floors that help guests unwind and rest easier. For guests looking for a touch of relaxation, the rejuvenating spa, well-equipped fitness center and tranquil poolside are some of the ample options to choose from. Spread across 19,500 sq ft, the indoor and outdoor banquet venues offer flexible meeting



Sirocco, the all-day dining restaurant, features an open kitchen that offers a view of chefs.



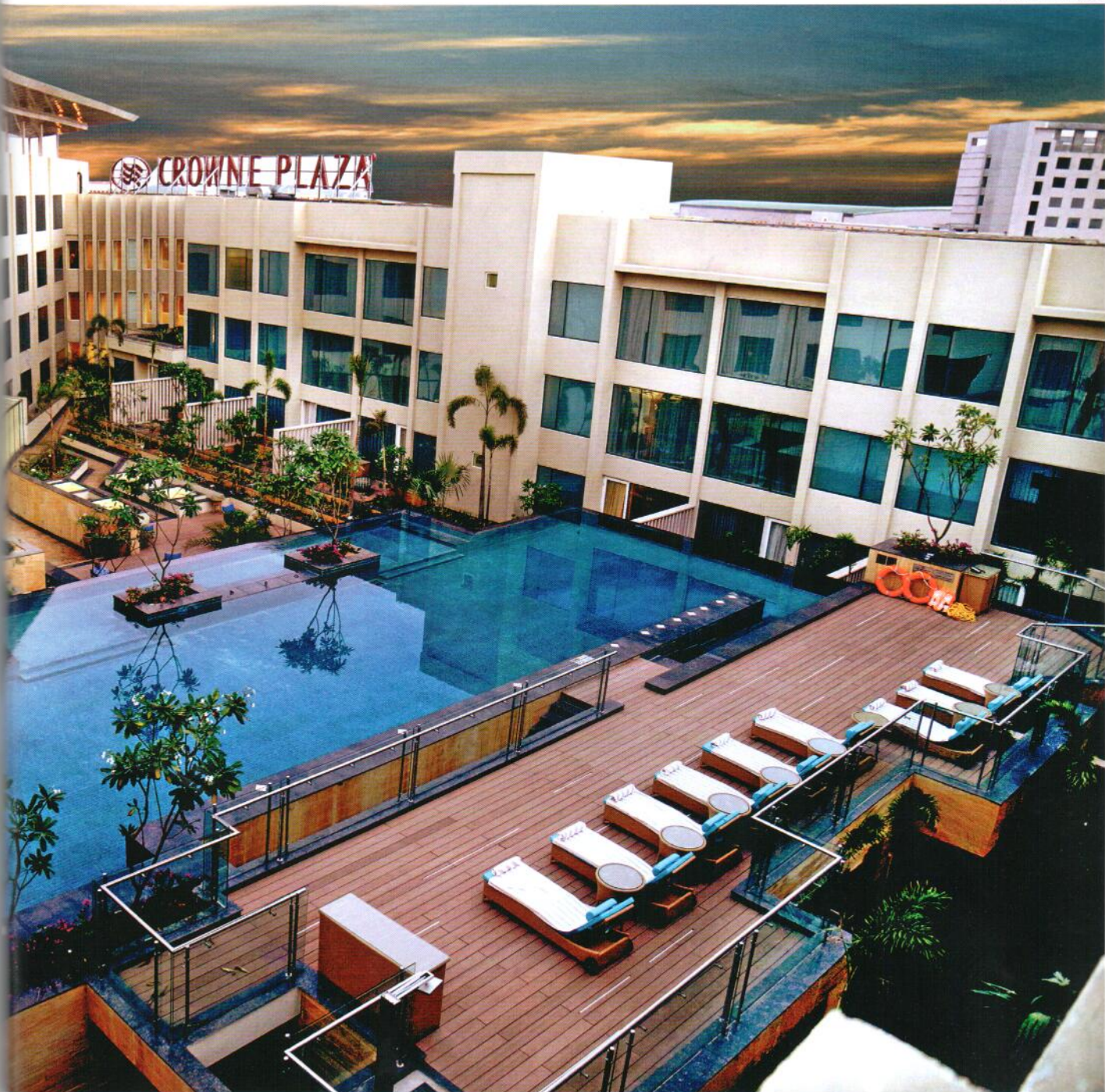
The pillar-less banquet hall can seat over 1,200 guests.



options capable of accommodating upto 1,200 guests. The expansive and pillarless hall is slated to be the most glamorous destination in the city. This 'Green Engage' certified hotel gives the property the ability to track energy, carbon and water consumption as well as assess how waste is managed.

Dining experience

The hotel provides five eclectic dining options to choose from. Be it alfresco or



private dining, each space has been planned and chalked out as per the cuisine it offers. Sirocco, the all-day dining features an open kitchen that offers a view of the chefs preparing a variety of Indian, Asian and international fare. Creating an all-encompassing experience for its patrons, The Lounge is conveniently designed to provide a contemporary and casual setting that overlooks manicured landscapes. For an authentic experience of South East Asian cuisine, House Of Han is the best bet with

its laser-cut MDF partitions and earthy tones. The high energy ConneXions Bar is the perfect place to unwind and relax with its welcoming, cool blue tones.

The Crowne Plaza, Jaipur Tonk Road has every element in the book that spells luxury, appeal and simplicity. **i**

PHOTOS: Crowne Plaza, Jaipur

CONTACT

www.crowneplaza.com

Rooms that face the central courtyard enjoy an expansive view of the swimming pool.